

A woman with brown hair, wearing large white headphones, is smiling and holding a glowing, curved, rainbow-like light effect. The background is dark with purple and blue hues.

Vantage Audio

Advanced Multi-Room Features For Today's Digital Lifestyle

multi-room audio solution

Scroll through your entire music library. View song, artist, and album information from Equinox touchscreens or mobile apps. With more sources, zones, power, control, and features, Vantage's multi-room audio system simplifies the enjoyment of your music.



The Vantage Audio Solution

850D-DA-II, P3100, P4300, P100, P200, P300, P400, P500

The multi-room audio system offers advanced and stylish features that make enjoying your musical experience even easier. From the 8500-DA-II amplifier and Nuvo 4300 Player series amplifiers/players to the Equinox family of keypads, touchscreens and apps, this system can enhance every room. Your living, working, or playing space will be equipped with an endless variety of your favorite music. Through Equinox, manage and play any source/zone combination.



audio system *core products*

The Vantage multi-room audio system is easily controlled through Vantage keypads, touchscreens, or apps; each provides the system owner with quick and intuitive access.



Multi-Room Amplifier

850D-DA-II

The cornerstone of the Vantage multi-room audio system is the 850D-DA-II Amplifier. With eight zones of audio distribution from twelve sources and highly efficient class D digital amplifiers, the 850D-DA-II is the most powerful amplifier from Vantage. For larger installations, an 850 system is scalable up to nine units, providing 72 zones of coverage.



Nuvo 4300 Player

P4300

The P4300 provides state of the art features for today's digital, multi-room audio systems. The amplifier/player devices are equipped to stream content from network stored audio, analog sources, and several Internet streaming services, including Pandora, SiriusXM, Spotify, Rhapsody, Tune-In, and others. This server blends perfectly with the Vantage audio solution.



audio system *interfaces*

See live cover art and graphical metadata from Vantage sources or supported partners

View currently playing music information such as song, album, artist, etc. or streaming service information such as a Pandora™ channel

Transport commands for current source

Live graphic animation indicates activity

Turn on/off audio and adjust volume



Zone Power

"Press" the discovery dots for more information about audio in the 2nd or full screen level

Widgets

Widgets for Equinox are designed to work specifically for use with the Vantage multi-room audio system, so using these core products will guarantee the best possible audio experience.



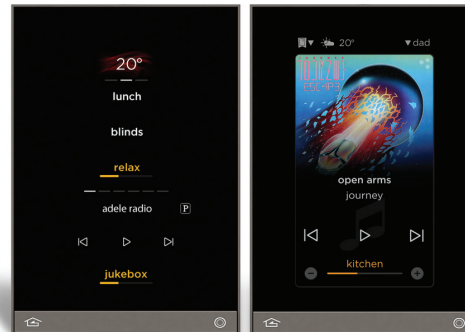
Equinox 73 LCD Touchscreen
EQ73TB-TI-II

The Equinox 73 touchscreen is a beautiful, wall-mounted interface for the Vantage audio system. It features a full-color, capacitive touchscreen and audio dashboard for quick access music libraries and streaming services.

Equinox 40 and 41 Digital Keypads

EQ40TB-TI-II and EQ41TB-TI

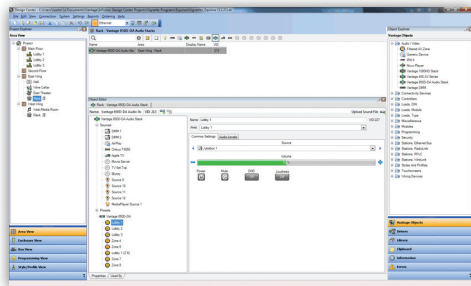
With Equinox 40 and 41, you can easily control music in the room through the audio mini widget and music for the whole home with scenes. View, play, pause, or skip current song, album, or artist from music servers, tuners, or streaming services. Turn audio on or off or adjust volume, plus much, much more.



audio *extra features*

Expansion

Engineered for expansion, the 850D-DA-II is scalable up to 9 units providing 72 zones of coverage



Easy Setup

Through InFusion Design Center software, zones, sources, and widgets come together quickly. No additional programming needed.

Streaming Services

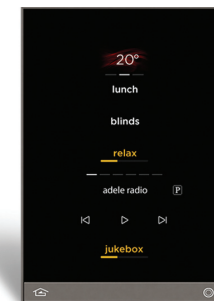
Bring an entire world of music to your home through the Nuvo Player Portfolio Streaming services from Pandora, Rhapsody, SiriusXM, Spotify, Tunein, and Last.fm. Additionally, enjoy access of iTunes and Windows Media libraries.

When teamed together with Equinox, an endless variety of music options means you are always just a tap or button press away from your favorite selection.



Premier Partners

Vantage premier drivers are developed to deliver the complete multi-room audio and multi-system control experience based on collaboration with leading custom electronics companies. Available for download and use through Design Center—when used in conjunction with the Equinox family of interfaces—premier partner drivers provide a simplified dashboard and rich media experience for the entire luxury space.



specifications

850D-DA Multi-Room Amplifier

850D-DA-II



Zones

8 Per Amplifier, 72 Total Per System

Sources

8 Stereo Audio, 12 Digital Audio

Interfaces

Equinox 40

Equinox 41

Equinox 73

Standard Keypad (Through Tasks)

LCD Touchscreen on Front

Zone Controls

Volume

Mute

Power

Audio Amplifier

Total Sources • 12

Minimum Load Impedance • 4 Ohms

Frequency Response • 20 Hz – 20kHz -3 dB

Total Harmonic Distortion • <0.1% rated power

Signal to Noise Ratio • 100 db (IHA-A, 1V Input/Unbalanced)

Audio Connections

Source Inputs • 8 Analog, 12 Digital, 4 Optical

Source Loop Outputs • 12

Zone Outputs • 6 Speaker Level, 2 Line Level

Paging Input • (1) Mono

Paging Output • (1) Mono

Connections

Ethernet Bus • 1 Shielded RJ45 Socket – 100BaseT

USB • USB min-B 5 pin

Power

Voltage • 110 or 240 VAC, 50-60 Hz

Fuse Rating • 100-240V Input; T5.0A 250V US and Canada

220-240V Input; T3.15A 250V Europe

Consumption • 280 Watts Continuous

Standby Consumption • 2 Watts

Dimensions, HWD

3.54"H x 17.13"W x 15.3"D

(90mm x 435mm x 390mm)

Miscellaneous

Weight • 22 lbs (10 kg)

Nuvo Player Portfolio

P4300



Input/Output Connectors

Line Input	3.5mm combination analog / TOSLINK
Line Output	3.5mm combination analog / TOSLINK
Trigger Output	12 volt 3.5 mm
Speaker Output	14 ga. four position phoenix connectors
USB Connection	Three, One per zone
Local Area Network (LAN)	RJ45, Cat5 minimum 10/100baseT minimum

Supported Audio Formats

Music Files (USB or network) • MP3, WMA, AAC, FLAC,
Ogg Vorbis, WAV
Internet Radio • Pandora, Sirius/XM, Rhapsody, TuneIn, Deezer,
iHeart Radio, Napster, Spotify

Power Requirements

Input Voltage • 100 -240VAC, 50/60Hz
Power Consumption • 260W
(Typical - Music) • 50 W

IP Control

Apple iTouch®, Apple iPhone®, Apple iPad®, Android Mobile,
Android Tablet

Network Connectivity

LAN (Wired Connection) • 10/100base-t Ethernet
Internal Ethernet Switch to 3 Independent Zone Nodes

Line Output

Output Level • 2 V RMS
Output Impedance • 470 Ohms

Line Input

Input Impedance • 20 K Ohms
Input Overload • 2 V RMS

Amplifier Output (Typical of 3 Zones)

Rated Output Power (1KHz/1% Distortion)
4 / 6 / 8 Ohms - 110W per zone
Distortion • 01 THD+N
Speaker Impedance • 4 / 6 / 8 Ohms
Frequency Response (20 - 20kHz) • +/- 1 dB
Signal-to-Noise Ratio (IHF-A) • 104 dB on speaker output @ 4
Ohms

Operating Temperature

0° C - 40° C

Dimensions, HWD

147 H x 430 W x 258 D

Miscellaneous

Weight • 2.9 kg

Regulatory Approvals

Safety • cTUVus, CE-LVD
EMC • US:FCC CFR Title 47 Part 15, Subpart B;
CANADA:ICES-003; EUROPE:CISPR13; EUROPE: 55020;
AUSTRALIA/NEW ZEALAND: C-TICK standard AS/NZS CISPR13
Environmental Compliance • RoHS

Nuvo Player Portfolio

P3100



Input/Output Connectors

Line Input / Output	3 - Dual RCA
Trigger Input / Output	3 - TS 3.5mm Stereo Jack
Speaker Output	3 - (4 Contact) Pluggable
USB 2.0 Connection (Type A)	3
Local Area Network (LAN)	1 - Dual RJ45

Supported Audio Formats

Music Files (USB or network) • MP3, WMA, AAC, FLAC, Ogg Vorbis, WAV
Internet Radio • Pandora, Sirius/XM, Deezer, iHeart, Napster Rhapsody, TuneIn, Spotify

Power Requirements

Input Voltage • 100 -240VAC, 50/60Hz
Power Consumption • 200W (max), 42W (Typical - 3 Zones, 1/8 Audio Power)

IP Control

Apple iPhone®, iPod Touch® and iPad®, Android® Mobile, Android Tablet

Network Connectivity

LAN (Wired Connection) • 10/100base-t Ethernet
Internal Ethernet Switch to 3 Independent Zone Nodes

Line Output

Output Level • 0-1000 mV RMS
Output Impedance • 5 Ohms
Signal-to-Noise Ratio at Rated Output • 91 dB A - Weighted

Line Input

Input Impedance • 10 KOhms
Input Overload • 2.3 V RMS

Amplifier Output (Typical of 3 Zones)

Rated Output Power (8 Ohm) • 40W (20W x 2)
Two Channels Driven 20 Hz - 20 KHz @ 0.5% Distortion
Rated Distortion (1/2 Power) • 0.20%
Speaker Impedance • 6 - 8 Ohms
Frequency Response (20 - 20kHz) • +/- 0.5 dB
Damping Factor • 50+
Signal-to-Noise Ratio at Rated Output • 92 dB A - Weighted

Audio Processing

Audyssey Dynamic Volume™, Balance
Bass Equalization • +/- 12 dB Range
Trebble Equalization • +/- 12 dB Range

Operating Temperature

0° C - 40° C

Dimensions, HWD

2.13"H x 16.93"W x 10.16"D (Including Feet)
(54mm x 430mm x 258mm)

Miscellaneous

Weight • 6.45 lbs (2.9 kg)

Regulatory Approvals

Safety • cTUVus, CE-LVD
EMC • FCC, IC, CE-EMC, C-Tick
Environmental Compliance • RoHS

Nuvo Player Portfolio

P100



Input/Output Connectors

Line Input	1 - TRS 3.5 mm stereo jack
Line Output	1 - TRS 3.5 mm stereo jack
Speaker Output	4 - Gold 5-way binding post
USB 2.0 Connection (Type A)	1
Local Area Network (LAN)	1 - RJ45

Supported Audio Formats

Music Files (via USB or network) • MP3, WMA, AAC, Ogg Vorbis, FLAC, WAV
Internet Radio • Pandora, Sirius/XM, Rhapsody, TuneIn, Deezer, iHeart Radio, Napster, Spotify

Power Requirements

Input Voltage • 100 - 240VAC, 50/60 Hz
Power Consumption • (max) 70 W, (typical - 1/8 audio power) 13W

IP Control

Apple iPod®, Apple iPhone® and Apple iPad®, Android Mobile, Android Tablet

Network Connectivity

LAN (Wired Connection) • 10/100base-t Ethernet
Wireless Connection • MIMO, 2 TX + 2 RX Channels
IEEE 802.11a/b/g/n

Line Output:

Output Level	0-1000 mV RMS
Output Impedance	5 Ohms
Signal-to-Noise Ratio at rated output	88 dB A - weighted

Line Input:

Input Impedance	10 KOhms
Input Overload	2.3 V RMS

Amplifier Output

Rated Output Power (8 ohm)	40W (20W x 2)
Two channels driven 20 Hz - 20 KHz @ 0.5% distortion	
Rated Distortion (1/2 Power)	0.20%
Speaker Impedance	6 - 8 ohms
Frequency Response (20 - 20kHz)	+/-0.5 dB
Damping Factor	50+
Signal-to-Noise Ratio at rated output	94 dB A - weighted

Audio Processing

Audyssey Dynamic Volume™, Balance
Bass Equalization • +/-12 dB range
Treble Equalization • +/-12 dB range

Operating Temperature

0° C - 40° C

Physical Specifications

1.69" H x 7.36" W x 5.39" D
(43mm x 187mm x 137mm)
Weight • 1.40 lbs (0.635 kg)

Shipping Specifications

9.45" D x 9.06" W x 2.60" H
(240mm x 230mm x 66mm)
Weight • 2.75 lbs (1.25 kg)

Regulatory Approvals

Safety • cTUVus, CE-LVD
EMC • FCC, IC, CE-EMC, C-Tick
Environmental Compliance • RoHS

Nuvo Player Portfolio

P200



Input/Output Connectors

Line Input / Output	1 - TRS 3.5mm Stereo Jack
Setup Mic: (Audyssey)	1 - TRS 3.5mm Stereo Jack
Speaker Output	4 - Gold 5-Way Binding Post
USB 2.0 Connection (Type A)	1
Local Area Network (LAN)	1 - RJ45

Supported Audio Formats

Music Files (USB or network) • MP3, WMA, AAC, FLAC, Ogg Vorbis, WAV
Internet Radio • Pandora, Sirius/XM, Rhapsody, TuneIn, Deezer, iHeart Radio, Napster, Spotify

Power Requirements

Input Voltage • 100 -240VAC, 50/60Hz
Power Consumption • 150W (max), 31W (Typical - 1/8 Audio Power)

IP Control

Apple iPhone®, iPod Touch® and iPad®, Android® Mobile, Android Tablet

Network Connectivity

LAN (Wired Connection) • 10/100base-t Ethernet
Wireless Connection • MIMO, 2 TX + 2 RX Channels, IEEE 802.11a/b/g/n

Line Output

Output Level • 0-1000 mV RMS
Output Impedance • 5 Ohms
Signal-to-Noise Ratio at Rated Output • 88 dB A - Weighted

Line Input

Input Impedance • 10 KOhms
Input Overload • 2.3 V RMS

Amplifier Output (Typical of 3 Zones)

Rated Output Power (8 Ohm) • 120W (60W x 2)
Two Channels Driven 20 Hz - 20 KHz @ 0.5% Distortion
Rated Output Power (4 Ohm) • 120W (60W x 2)
Two Channels Driven 20 Hz - 20 KHz @ 0.5% Distortion
Rated Distortion (1/2 Power) • 0.20%
Speaker Impedance • 4 - 8 Ohms
Frequency Response (20 - 20kHz) • +/- 0.5 dB
Damping Factor • 65+
Signal-to-Noise Ratio at Rated Output • 92 dB A - Weighted

Audio Processing

Audyssey Dynamic Volume™, Balance
Bass Equalization • +/- 12 dB Range
Trebble Equalization • +/- 12 dB Range

Operating Temperature

0° C - 40° C

Dimensions, HWD

1.69"H x 9.72"W x 6.89"D
(43mm x 247mm x 175mm)

Miscellaneous

Weight • 2.65 lbs (1.20 kg)

Regulatory Approvals

Safety • cTUVus, CE-LVD
EMC • FCC, IC, CE-EMC, C-Tick
Environmental Compliance • RoHS

Nuvo Player Portfolio

P400



Input/Output Connectors

Line Input • 3.5 mm combination analog/TOSLink

USB Connection • One

Local Area Network (LAN) • RJ45, Cat5 minimum,
10/100baseT minimum

Supported Audio Formats

Music Files (via USB or network) • MP3, WMA, AAC, Ogg

Vorbis, FLAC, WAV

Internet Radio • Pandora, Sirius/XM, Rhapsody, TuneIn, Deezer,
Napster, Spotify

Third Party Compatibility

URC, RTI, Crestron, Bit Wise, KNX

Power Requirements

Input Voltage • 110 – 240VAC, 50/60 Hz

Power Consumption • (max) 80 W, (typical) 50 W

IP Control

Apple iTouch*, Apple iPhone*, Apple iPad*, Android Mobile,
Android Tablet

Network Connectivity

LAN (Wired Connection) • Ethernet

Wireless Connection • 802.11 a,b,g,n 2.4 GHz or 5GHz band

Output

Frequency Response • 50 Hz to 20 KHz

Line Input

Input Impedance • 10 KOhms

Input Overload • 2.2 V RMS

Regulatory Approvals

Safety • US:FCC CFR Title 47 Part 15, Subpart B;

CANADA:ICES-003; EUROPE:CISPR13; EUROPE: 55020;

AUSTRALIA/NEW ZEALAND: C-TICK standard AS/NZS CISPR13

Environmental Compliance • RoHS

Audio Processing

Audyssey Dynamic Volume™, Balance

Bass Equalization • +/-12 dB range

Treble Equalization • +/-12 dB range

Operating Temperature

0° C - 40° C

Physical Specifications

Material • Metal/Plastic

Color • Black

Unit Size without feet • 217 H x 368 W x 149 D

Unit Size with feet • 217 H x 368 W x 149 D

Unit Weight • 4.69 kg

Shipping Specifications

483 L x 228 W x 287 H

Nuvo Player Portfolio

P500



Input/Output Connectors

Line Input • RCA / TOSLINK

USB Connection • One

Local Area Network (LAN) • RJ45, Cat5 minimum,
10/100baseT minimum

Supported Audio Formats

Music Files (via USB or network) • MP3, WMA, AAC, Ogg

Vorbis, FLAC, WAV

Internet Radio • Pandora, Sirius/XM, Rhapsody, TuneIn, Deezer,
Napster, Spotify

Power Requirements

Input Voltage • 110 – 240VAC, 50/60 Hz

Power Consumption • (max) 80 W, (typical) 50 W

IP Control

Apple iTunes®, Apple iPhone®, Apple iPad®, Android Mobile,
Android Tablet

Network Connectivity

LAN (Wired Connection) • Ethernet

Wireless Connection • 802.11 a,b,g,n 2.4 GHz or 5GHz band

Output

Distortion • 0.5% max

Frequency Response • 50 Hz to 20 KHz

Line Input

Input Impedance • 10 KOhms

Input Overload • 2.2 V RMS

Regulatory Approvals

Safety • US:FCC CFR Title 47 Part 15, Subpart B;

CANADA:ICES-003; EUROPE:CISPR13; EUROPE: 55020;

AUSTRALIA/NEW ZEALAND: C-TICK standard AS/NZS CISPR13

Environmental Compliance • RoHS

Operating Temperature

0° C - 40° C

Physical Specifications

Soundbar Size without feet (mm) 108 H x 877 W x 115 D

Subwoofer Size without feet (mm) 235 H x 231 W x 303 D

Soundbar Size with feet (mm) 115 H x 877 W x 115 D

Subwoofer Size with feet (mm) 261 H x 231 W x 303 D

Soundbar Weight (kg) 4.65

Subwoofer Weight (kg) 4.69

Shipping Specifications

Unit Size (mm) 970 L x 315 W x 492.76 H

Unit Weight (kg) 12.7

Nuvo Player Portfolio

P300



Input/Output Connectors

Line Input	1 - TRS 3.5 mini TOSLINK Combo Receiver
Line Output	1 - TRS 3.5 mini TOSLINK Combo Receiver
USB 2.0 Connection (Type A)	1
Local Area Network (LAN)	1 - RJ45

Supported Audio Formats

Music Files (via USB or network) • MP3, WMA, AAC, Ogg
Vorbis, FLAC, WAV
Internet Radio • Pandora, Sirius/XM, Rhapsody, TuneIn, Deezer,
iHeart Radio, Napster, Spotify
Playlist Support • WPL, M3U, PLS, iTunes

Power Requirements

Input Voltage • 100 – 240VAC, 50/60 Hz
Power Consumption • (max) 10 W, (typical) 5.1 W

IP Control

Apple iTouch®, Apple iPhone® and Apple iPad®, Android Mobile,
Android Tablet

Network Connectivity

LAN (Wired Connection) • 10/100base-t Ethernet
Wireless Connection • MIMO, 2 TX + 2 RX Channels
IEEE 802.11a/b/g/n

Line Output - Digital

Sample Rates	44.1 KHz-192KHz
Bit Rate	24B
Signal-to-Noise Ratio at rated output	>120 dB SNR
THD+n	<0.0005%
Frequency Response	+/-0.1 dB 20 Hz to 20 KHz

Line Input Digital

Sample Rates	44.1 KHz-192KHz
Bit Rate	24B
Signal-to-Noise Ratio at rated output	>120 dB SNR
THD+n	<0.0005%
Frequency Response	+/-0.1 dB 20 Hz to 20 KHz

Line Output - Analog

Output Level	0-2.0 V RMS
Output Impedance	5 Ohms
Signal-to-Noise Ratio, rated output	>100 dB SNR
THD+n	<0.005%
Frequency Response	+/- 0.5 dB 20 Hz to 20 KHz

Line Input - Analog

Input Impedance	10 KOhms
Input Overload	2.0 V RMS
Signal-to-Noise Ratio, rated output	>100 dB SNR
THD+n	<0.005%
Frequency Response	+/- 0.5 dB 20 Hz to 20 KHz

Audio Processing

Audyssey Dynamic Volume™, Balance
Bass Equalization • +/-12 dB range
Treble Equalization • +/-12 dB range

Operating Temperature

0° C - 40° C

Physical Specifications

1.5" H x 5.73" W x 3.56" D
(38mm x 145.5mm x 90.5mm)
Weight • 0.5 lbs (0.2 kg)

Shipping Specifications

9.45" D x 9.06" W x 2.58" H
(240mm x 230mm x 65.5mm)
Weight • 2.87 lbs (1.30 kg)

Regulatory Approvals

Safety • cTUVus, CE-LVD
EMC • FCC, IC, CE-EMC, C-Tick
Environmental Compliance • RoHS

SERIE TWO



VA-NV-2IC6



VA-NV-2IC6-ANG



VA-NV-2IC6-DVC



VA-NV-2IC8



VA-NV-2IC8-ANG



VA-NV-2IW6



VA-NV-2IW5-LCR

Frequency

Speaker Impedence

Regulatory Approvals - Environmental

Sensitivity

Power RMS

Power Peak

Woofer Material

Tweeter Material

Unit Weight (kg)

Unit Weight (lbs)

Woofer Size (in)

Woofer Size (mm)

Tweeter Size (in)

Tweeter Size (mm)

Overall Size (in)

Overall Size (mm)

Mounting Cutout (in)

Mounting Cutout (mm)

Overall Speaker Depth (in)

Overall Speaker Depth (mm)

Shipping

60Hz - 20KHz

8 Ohms

CE, RoHS,
REACH,
Compliant,
#ABS and
#4 PELD
Recyclable

86dB

50w

100w

Poly

Silk

3.28

7.24

6.5"

165mm

0.5"

13mm

9.06"

230mm

8.07"

205mm

3.90"

99mm

Pair

60Hz - 20KHz

8 Ohms

CE, RoHS,
REACH,
Compliant,
#ABS and
#4 PELD
Recyclable

86dB

50w

100w

Poly

Silk

1.80

3.96

6.5"

165mm

0.5"

13mm

9.06"

230mm

8.07"

205mm

4.57"

116mm

Single

55Hz - 20KHz

8 Ohms

CE, RoHS,
REACH,
Compliant,
#ABS and
#4 PELD
Recyclable

86dB

50w

100w

Poly

Silk

1.97

4.35

6.5"

165mm

0.5"

13mm

9.06"

230mm

8.07"

205mm

3.90"

99mm

Single

45Hz - 20KHz

8 Ohms

CE, RoHS,
REACH,
Compliant,
#ABS and
#4 PELD
Recyclable

86dB

50w

100w

Poly

Silk

1.97

4.35

8"

203mm

0.5"

13mm

10.63"

270mm

9.68"

246mm

4.37"

111mm

Pair

45Hz - 20KHz

8 Ohms

CE, RoHS,
REACH,
Compliant,
#ABS and
#4 PELD
Recyclable

86dB

50w

100w

Poly

Silk

2.58

5.69

8"

203mm

0.5"

13mm

11.22"

285mm

10.15"

258mm

5.31"

135mm

Single

60Hz - 20KHz

8 Ohms

CE, RoHS,
REACH,
Compliant,
#ABS and
#4 PELD
Recyclable

86dB

50w

100w

Poly

Silk

3.60

7.94

6.5"

165mm

0.5"

13mm

8.66" x 11.81"

220mm x 300mm

7.6" x 10.79"

194mm x 274mm

3.27"

83mm

Pair

60Hz - 20KHz

8 Ohms

CE, RoHS,
REACH,
Compliant,
#ABS and
#4 PELD
Recyclable

86dB

50w

100w

Poly

Silk

1.98

4.38

5.25"

133.35mm

0.5"

13mm

15.35" x 7.48"

390mm x 190mm

6.41" x 14.3"

163mm x 363mm

3.35"

85mm

Single

SERIESFOUR



Frequency Speaker Impedance Regulatory Approvals - Environmental

Sensitivity
Power RMS
Power Peak
Woofer Material
Tweeter Material
Unit Weight (kg)
Unit Weight (lbs)
Woofer Size (in)
Woofer Size (mm)
Tweeter Size (in)
Tweeter Size (mm)
Overall Size (in)
Overall Size (mm)
Mounting Cutout (in)
Mounting Cutout (mm)
Overall Speaker Depth (in)
Overall Speaker Depth (mm)
Shipping

VA-NV-4IC6

55Hz - 20KHz
8 Ohms
CE, RoHS,
REACH,
Compliant,
#ABS and
#4 PELD
Recyclable
88dB
75w
150w
Glass Fiber
Aluminum
3.72
8.20
0.75"
19mm
9.06"
13mm
9.06"
230mm
8.07"
205mm
3.94"
100mm
Pair

VA-NV-4IC6-ANG

55Hz - 20KHz
8 Ohms
CE, RoHS,
REACH,
Compliant,
#ABS and
#4 PELD
Recyclable
88dB
75w
150w
Glass Fiber
Aluminum
2.01
4.44
0.75"
19mm
9.06"
13mm
9.06"
230mm
8.07"
205mm
4.76"
121mm
Single

VA-NV-4IC6-DVC

50Hz - 20KHz
8 Ohms
CE, RoHS,
REACH,
Compliant,
#ABS and
#4 PELD
Recyclable
88dB
75w
150w
Glass Fiber
Aluminum
2.26
4.98
0.75"
19mm
9.06"
13mm
9.06"
230mm
8.07"
205mm
3.94"
100mm
Single

VA-NV-4IC8

40Hz - 20KHz
8 Ohms
CE, RoHS,
REACH,
Compliant,
#ABS and
#4 PELD
Recyclable
88dB
75w
150w
Glass Fiber
Aluminum
4.35
9.58
0.75"
19mm
10.63"
13mm
10.63"
270mm
9.68"
246mm
4.41"
112mm
Pair

VA-NV-4IC8-ANG

40Hz - 20KHz
8 Ohms
CE, RoHS,
REACH,
Compliant,
#ABS and
#4 PELD
Recyclable
88dB
75w
150w
Glass Fiber
Aluminum
2.58
5.69
0.75"
19mm
11.22"
13mm
11.22"
285mm
10.15"
258mm
5.55"
141mm
Single

VA-NV-4IW6

55Hz - 20KHz
8 Ohms
CE, RoHS,
REACH,
Compliant,
#ABS and
#4 PELD
Recyclable
88dB
75w
150w
Glass Fiber
Aluminum
3.95
8.71
0.75"
19mm
8.66" x 11.81"
13mm
8.66" x 11.81"
220mm x 300mm
7.6" x 10.79"
194mm x 274mm
3.27"
83mm
Pair

VA-NV-4IW5-LCR

60Hz - 20KHz
8 Ohms
CE, RoHS,
REACH,
Compliant,
#ABS and
#4 PELD
Recyclable
88dB
75w
150w
Glass Fiber
Aluminum
2.16
4.77
0.75"
19mm
15.35" x 7.48"
13mm
15.35" x 7.48"
45mm x 256mm
6.41" x 14.3"
163mm x 363mm
3.35"
85mm
Single

SERIES SIX



	VA-NV-6IC6	VA-NV-6IC6-ANG	VA-NV-6IC8	VA-NV-6IC8-ANG	VA-NV-6IW6	VA-NV-6IW6-LCR
Frequency	60Hz - 20KHz	60Hz - 20KHz	35Hz - 20KHz	35Hz - 20KHz	50Hz - 20KHz	45Hz - 20KHz
Speaker Impedence	8 Ohms	8 Ohms	8 Ohms	8 Ohms	8 Ohms	8 Ohms
Regulatory Approvals - Environmental	CE, RoHS, REACH, Compliant, #ABS and #4 PELD Recyclable	CE, RoHS, REACH, Compliant, #ABS and #4 PELD Recyclable	CE, RoHS, REACH, Compliant, #ABS and #4 PELD Recyclable	CE, RoHS, REACH, Compliant, #ABS and #4 PELD Recyclable	CE, RoHS, REACH, Compliant, #ABS and #4 PELD Recyclable	CE, RoHS, REACH, Compliant, #ABS and #4 PELD Recyclable
Sensitivity	89dB	89dB	89dB	89dB	89dB	89dB
Power RMS	100w	100w	100w	100w	100w	100w
Power Peak	200w	200w	200w	200w	200w	200w
Woofer Material	Kevlar®/Carbon Fiber Weave	Kevlar®/Carbon Fiber Weave	Kevlar®/Carbon Fiber Weave	Kevlar®/Carbon Fiber Weave	Kevlar®/Carbon Fiber Weave	Kevlar®/Carbon Fiber Weave
Tweeter Material	Titanium	Titanium	Titanium	Titanium	Titanium	Titanium
Unit Weight (kg)	3.79	2.01	4.35	2.58	3.95	2.47
Unit Weight (lbs)	8.35	4.44	9.58	5.69	8.71	5.4
Woofer Size (in)	6.5"	6.5"	8"	8"	6.5"	6.5"
Woofer Size (mm)	165mm	165mm	203mm	203mm	165mm	165mm
Tweeter Size (in)	1"	1"	1"	1"	1"	1"
Tweeter Size (mm)	25mm	25mm	25mm	25mm	25mm	25mm
Overall Size (in)	9.06"	9.06"	10.63"	11.22"	8.66" x 11.81"	19.8" x 11.26"
Overall Size (mm)	230mm	230mm	270mm	285mm	220mm x 300mm	505mm x 286mm
Mounting Cutout (in)	8.07"	8.07"	9.68"	10.15"	7.6" x 10.79"	7.6" x 16.65"
Mounting Cutout (mm)	205mm	205mm	246mm	258mm	194mm x 274mm	193mm x 423mm
Overall Speaker Depth (in)	3.94"	4.76"	4.41"	5.55"	3.27"	3.5"
Overall Speaker Depth (mm)	100mm	121mm	112mm	141mm	83mm	90mm
Shipping	Pair	Single	Pair	Single	Pair	Single

SERIE TWO&SIX

OUTDOOR SPEAKERS

Enhance your exterior living spaces with the powerful audio of Nuvo. The Series Two and Series Six Outdoor Speakers are designed with high-quality components that deliver clean, immersive sound to outdoor areas. Offering a sleek enclosure with modern form and minimal size, Nuvo Outdoor Speakers tastefully blend with the style of any home.

- 8 ohm rated
- Aluminum powder coated grill
- Aluminum speaker bracket
- Lifetime Warranty
- IP65 rated for outdoor use and MILSTD-810 for UV, salt spray, and temperature extremes
- Available in white and black

Series two 5.25" & 6.5" Outdoor Speaker

VA-NV-20D5-BK
VA-NV-20D5-WH
VA-NV-20D6-BK
VA-NV-20D6-WH



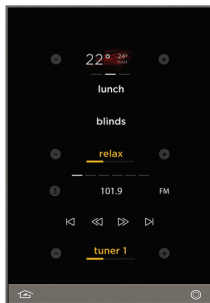
Series six 5.25" & 6.25" Outdoor Speaker

VA-NV-60D5-BK
VA-NV-60D5-WH
VA-NV-60D6-BK
VA-NV-60D6-WH



Equinox 40 Digital Keypad

EQ40TB-TI-II



Display

4.3" Diagonal
Active Matrix Color LCD

Features

Up to 3 Swipable Pages
Single Layer Mini-Widget UI

Controls

Hard Buttons • 2 (1 Home, 1 Programmable)
Header Mini-Widget (Climate, Clock, Weather,
None)
Scenes Mini-Widget
Audio Mini-Widget

Sensors

Proximity
Light (for Screen Brightness)

Connections

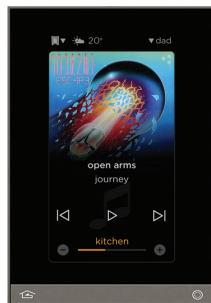
Station Bus • 1
Auxiliary • 1

Wall Dimensions

3.54"W x 4.72"H
90mm W x 120mm H
0.45"/ 11mm Off-Wall

Equinox 41 Digital Keypad

EQ41TB-TI



Display

4.3" Diagonal
Active Matrix Color LCD

Features

Single Widget UI & idem app phone

Controls

Hard Buttons • 2 (1 Home, 1 Programmable)
Full Widgets:
Audio, Climate, Scenes, Lighting, Weather,
Video, Cameras, Security, Theater,
Pool/Spa, Shades, Timers

Sensors

Proximity
Light (for Screen Brightness)

Connections

RJ45 (PoE) • 1

Wall Dimensions

3.54"W x 4.72"H
90mm W x 120mm H
0.45"/ 11mm Off-Wall

Equinox 73 Touchscreen

EQ73TB-TI-II



audio full screen shown above

Display

7.1" Diagonal

Active Matrix Color LCD

Features

- Triple Widget UI
- Live Dashboard
- Three Layer
- Profiles for Users, Spaces, Functions and Time
- Personalizable UI for Each User

Controls

- Hard Buttons • 2 (1 Home, 1 Programmable)
- Full Widgets:
 - Audio, Climate, Scenes, Lighting, Weather,
 - Video, Cameras, Security, Theater,
 - Pool/Spa, Shades, Timers

Sensors

- Light (for Screen Brightness)

Connections

- RJ45 (PoE) • 1

Wall Dimensions

- 8.54"W x 4.72"H
- 217mm W x 120mm H
- 0.45"/ 11mm Off-Wall

Equinox App - Tablet

EQ-APP-5, EQ-APP-10, EQ-APP-X



dashboard shown above

Compatibility

Apple, Android

Features

- Triple Widget UI
- Live Dashboard
- Three Layer
- Profiles for Users, Spaces, Functions and Time
- Personalizable UI for Each User

Controls

- Full Widgets:
 - Audio, Climate, Scenes, Lighting, Weather,
 - Video, Cameras, Security, Theater,
 - Pool/Spa, Shades, Timers

Licensing

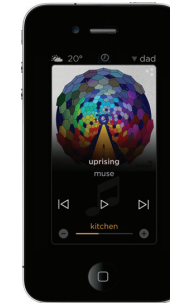
Device License: A device license allows a single device to be connected to a Vantage system

Multi-License: A multi-license enables any number of supported devices to function as an interface when they are connected to a single InFusion system



Equinox App - Phone

EQ-APP-5, EQ-APP-10, EQ-APP-X



audio widget shown above

Compatibility

Apple, Android

Features

- Single Widget UI
- Live Dashboard
- Three Layer
- Profiles for Users, Spaces, Functions and Time
- Personalizable UI for Each User

Controls

- Full Widgets:
 - Audio, Climate, Scenes, Lighting, Weather,
 - Video, Cameras, Security, Theater,
 - Pool/Spa, Shades, Timers

Licensing

Device License: A device license allows a single device to be connected to a Vantage system

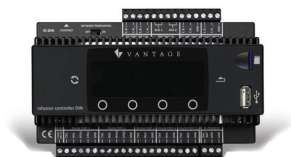
Multi-License: A multi-license enables any number of supported devices to function as an interface when they are connected to a single InFusion system



related products

In addition to the main products featured on page three, a complete Vantage multi-room audio solution could also contain one or more of the products listed below.

InFusion DIN Controller
IC-DIN-II



Integration Controller
IRXII



Alexa Integration
ALEXA-GW





Legrand Integrated Solutions nv/sa
Binnendijk 40, 9130 Beveren
Belgium
T : +32 (0)3 773 31 06
www.legrandintegratedsolutions.com



1061 South 800 East
Orem, Utah 84097
800.555.9891
801.229.2800
801.224.0355 fax

www.vantagecontrols.com

©2017 by Vantage. All Rights Reserved.
M-B-AUDIO