

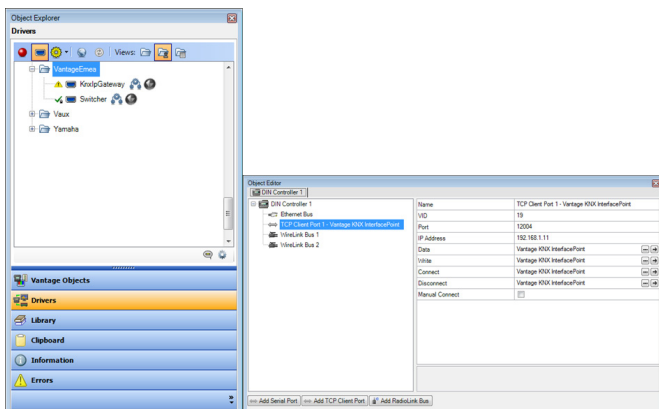
KNX INTERFACE POINT

Integration Modules



The Vantage KNX interface is a versatile bridge between Vantage & KNX, making it easy to integrate KNX systems in the Vantage Infusion System.

Vantage combined with KNX linkage incorporates 3rd party devices from many different manufacturers in the field of light, relay, scene and blind control and offers seamless integration in the complete Vantage automation system. The simple and intuitive interface provides control and feedback to any Vantage touchscreen, iPad, Iphone, ... With the push of a button, a homeowner can effortlessly control these KNX based devices. In addition to this the homeowner will also get status feedback visualization from all of these different functionalities. The increasing number of products by different KNX manufacturers provides a good variety of installation options.

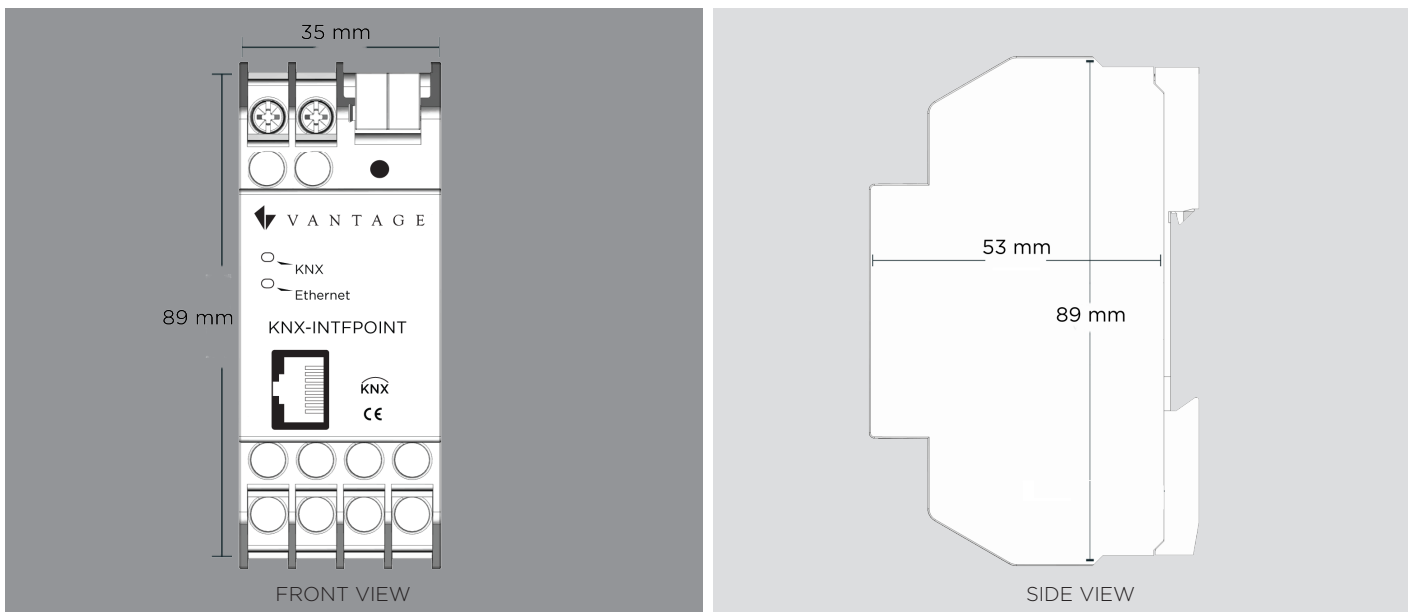


Interface set-up in Infusion Design Center software

Product Highlights

- Designed to integrate KNX certified products
- Controlling virtually any installation of light, relay, scene and blind control
- Expanding easily the existing home automation system with new KNX based devices and functionalities
- LED indication
- Configuration within Vantage's Infusion Design Center software (see screenshot) as well as in the KNX ETS software

KNX Interface Point



Specifications

Dimensions, HWD

3.5 " x 1.38 " x 2.09 "
89 mm x 35 mm x 53 mm

General Specifications

Model	KNX-INTFPOINT
Weight	100g
Colour	Off White
Connection	DataPoint level (KNX application layer) through a network (LAN) connection
Mounting	DIN Mountable (2 DIN units width 36mm)
Power Mode	External power supply - PoE (power over Ethernet)
Operation Power	12-24V AC / 12-30V DC (screw connection)
Power consumption	Low power consumption
LED indicators	Learning LED (red) - Signal LED KNX (green) - Signal LED LAN (green)
Certification	KNX / CE / EMC

System Compatibility

InFusion