



HOTFIX

IC-II FIRMWARE 4.3.1.8 HOTFIX

IC-II Firmware 4.3.1.8 Hot Fix

This hotfix release is intended to fix an issue causing the loss of module communication.

This will also improve some intermittent delays in Module and station functionality for ICs that are accessible over the internet.

NOTE: This is intended to be used with Design Center versions 4.3.2 and higher. Using this firmware with older versions of Design Center can lead to breaking of device functionality and is not recommended.



SECTION ONE | Updating Firmware On IC-II Controllers



UPDATING FIRMWARE ON IC-II CONTROLLERS

Updating Firmware On the Controller to 4.3.X

These steps provide information on updating your controller's firmware with Design Center 4.3.X.

IMPORTANT!

1. IMPORTANT! This update must be performed locally, not remotely. Before you begin, please write down the controller #01 serial number located on the product box label, or on the back of the controller. Download the Firmware 4.3.1.8 to your computer (Desktop is recommended for ease of locating file later).

File Conversion Required

The selected file was created in a previous version of Design Center and must be converted. Once converted and saved, it will no longer open in earlier versions of Design Center.

Convert

Cancel

2. If you are working with a DC Project file that was made in Design Center 4.x, please proceed to step 3. If you are updating a project that was made in an older version of Design Center, please do the following first: From within Design Center 4.x, open your existing project. A "File Conversion Required" message will appear. Select **Convert**, then immediately after the file has converted, do a **Save As** and use a new file name so you avoid saving over your original file.

VANTAGE | Design Center

Version 4.3.1

3. Make sure that you are using Design Center 4.3.1 and verify the IP address of your InFusion Controller. Go to **Toolbar > Connection > IP Address** and enter in the IP address of your controller. You can also use the pull down field to find and select your controller by IP address.

Missing Serial Number

Please enter the serial number that corresponds to IC-II 1:

OK

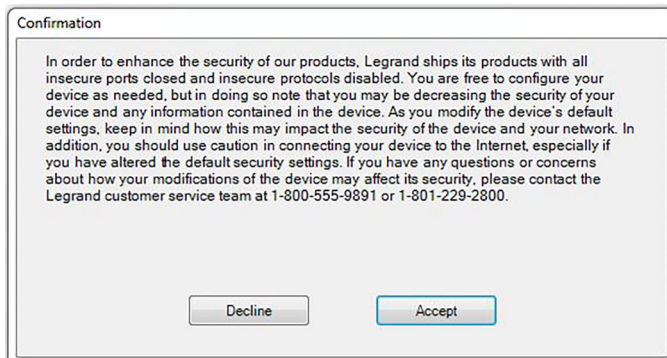
Cancel

0

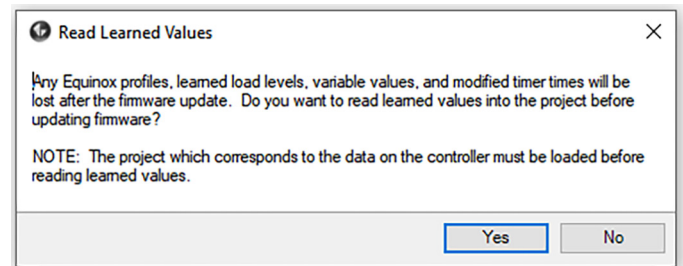
4. Go to **Toolbar > System > Update Firmware** and select **Update Controller Firmware**. You will receive a **Missing Serial Number** window. Enter in the serial number of your InFusion Controller and select **OK**.



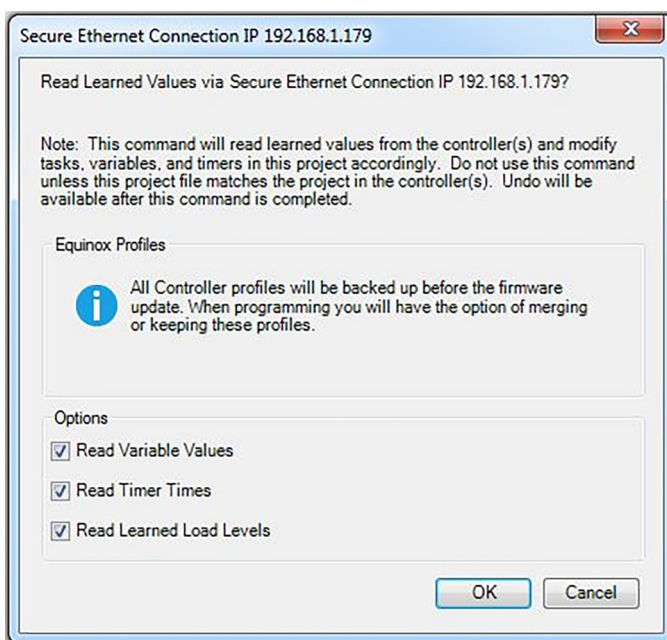
SECTION ONE | Updating Firmware On IC-II Controllers (continued)



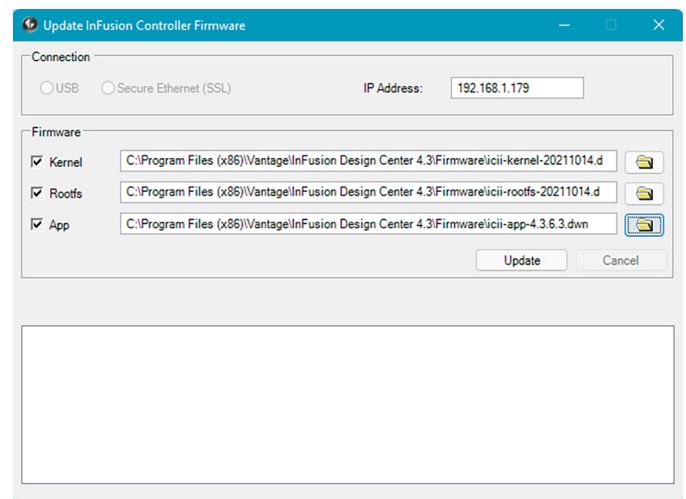
5. A confirmation window will appear. Please review the EULA and select **Decline** to end the update process or **Accept** to continue with the firmware update.



6. Next, the **Read Learned Levels** window will appear. If you are upgrading an existing site and need to retain Equinox profiles, learned load levels, etc., select the **Yes** box. If this is a new site and you do not need to retain Equinox profiles, learned load levels, etc., select **No** to proceed.



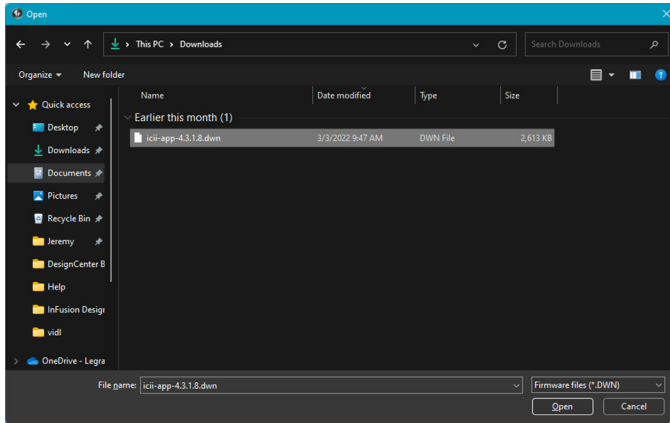
7. You will see a yellow Vantage icon in the upper menu as Design Center is connected to the InFusion Controller. If you selected Yes from the previous step, the **Secure Ethernet Connection** window will appear. Select the options that you would like to retain while updating the controller firmware. Select **OK** to proceed.



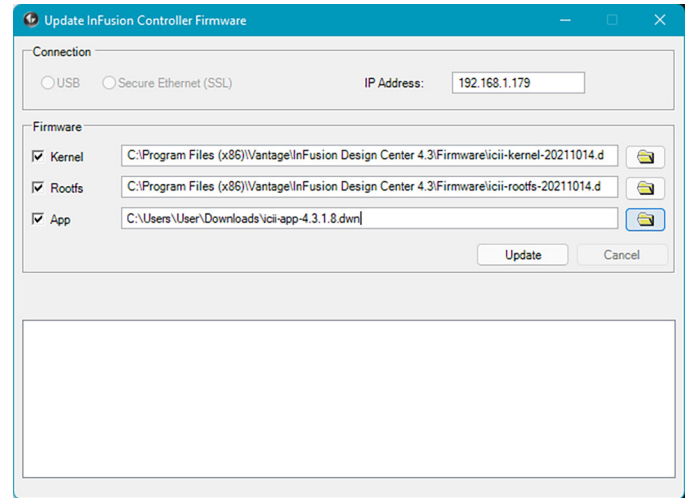
8. Inside the **Update InFusion Controller Firmware** window, check the boxes next to the Kernel, Rootfs, and App so that each of these will all be updated together. This is required when moving to Design Center 4.3.1.8 from any previous versions. Click the **Folder** icon next to the **App Row** to select the 4.3.1.8 firmware location.



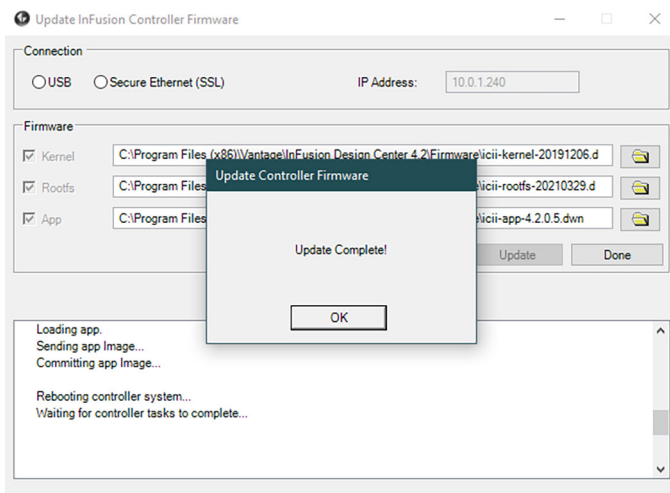
SECTION ONE | Updating Firmware On IC-II Controllers (continued)



9. Find the location of the downloaded 4.3.1.8 Firmware file (browse back to the desktop for the App firmware) in the Open dialog and, once selected, click **Open**.



10. Select **Update** to continue. All controllers in a system will be updated during this process. You do not need to connect to each controller separately. When you are asked that "the kernel and rootfs is not newer than the version already installed on the controller. Install anyway?", select **Yes**.



11. After this process is complete, select **OK** on the **Update Complete!** box. Using the front LCD on the InFusion Controller, verify that the firmware version has updated.